

Engineering Change Notice

Part No. <u>5221</u>	ECN No. <u>20-035</u>
Part Name <u>MALE CONTACT</u>	Date <u>4.07.20</u>
Rev. <u>—</u>	ECR No. <u>—</u>

Description of Change: Drawing Attached

TOLERANCE $\pm.015$ HAS BEEN ADDED TO DIA. OF BUTTON CONTACT ON CUSTOMER DRAWING ONLY

Solution: Tooling Change Required

REVISE C+M

Disposition of Parts:

U.A.I.

Signed LN Date 4.07.20

Required Distribution:

Engineering Quality Control Purchasing Manufacturing/Supplier

Chief Engineer: _____ Remarks: _____

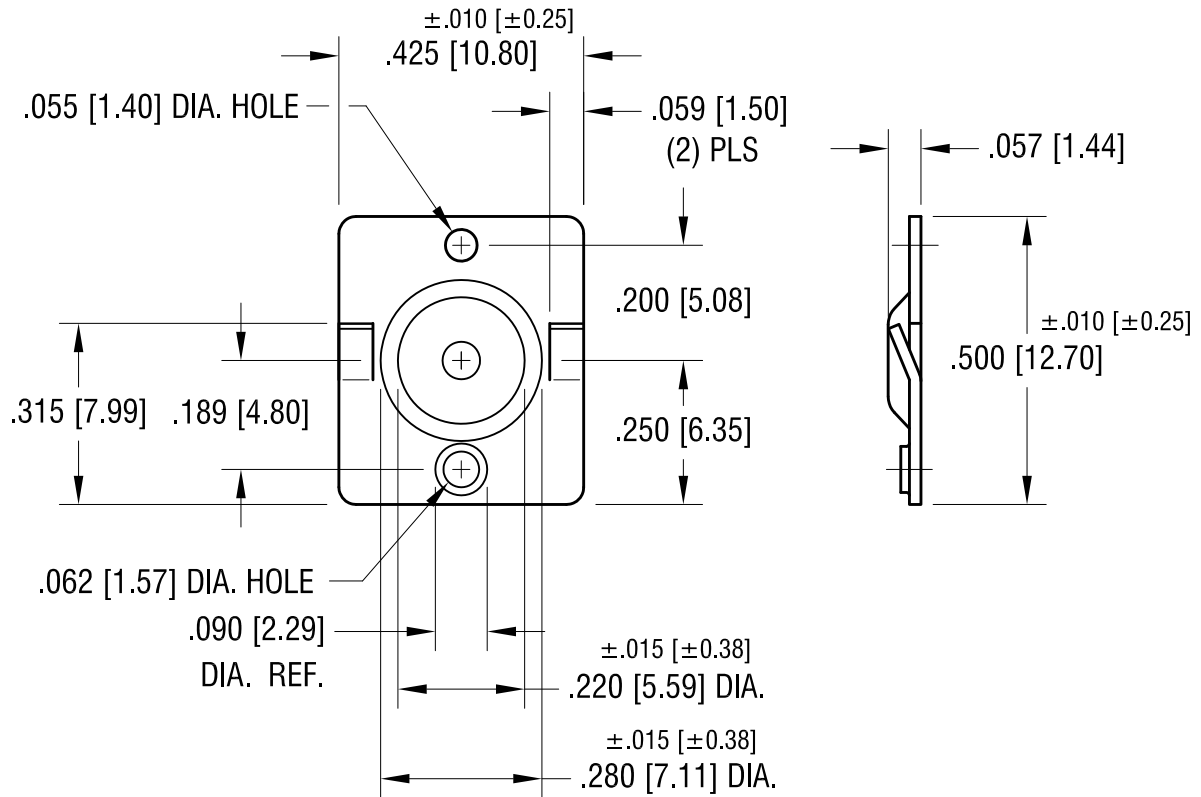
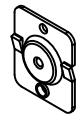
Signed LN Date 4.07.20

Document Control: _____ Rev. A

Change Incorporated Signed NATASHA T. Date 4.07.20

THIS DOCUMENT IS THE PROPERTY OF
KEYSTONE ELECTRONICS CORP. AND
SHALL NOT BE REPRODUCED, DISTRIBUTED
OR USED AS A BASIS FOR MANUFACTURE
WITHOUT PRIOR WRITTEN PERMISSION
FROM KEYSTONE ELECTRONICS CORP.

ACTUAL SIZE



NOTES:

- MAT'L - $.020 [0.50]$ TH'K STEEL

KEYSTONE ELECTRONICS CORP.

www.keyelco.com • NEW HYDE PARK, NY 11040 • Tel (516) 328-7500

PART NAME

'AA' MALE BATTERY CONTACT

MATERIAL

$.020 [0.50]$ TH'K STEEL

FINISH

NICKEL PLATE

DRN BY

BOONE

DATE

3.30.05

APP'D

LN

SCALE

3X

4.07.20

CHANGE AS PER ECN 20-035

A

TOLERANCES

INCH [MM]

CODE

DWG NO.

DECIMAL $\pm .005 [\pm 0.13]$

ANGULAR $\pm 1^\circ$

UNLESS OTHERWISE SPECIFIED

C

5221

DATE

DESCRIPTION

REV.